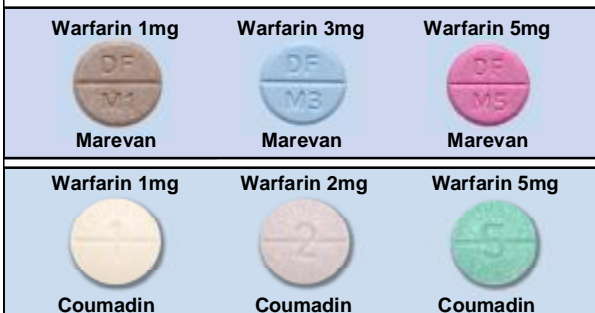


WARFARIN PATIENT INFORMATION

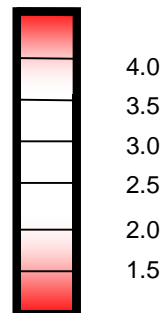
Warfarin stops clots from being made or getting bigger



© Warfarin Flipchart Group, 2005
This is a clinical guideline only

The right dose = the right INR

Too high - may bleed



Too low – won't work

© Warfarin Flipchart Group, 2005
This is a clinical guideline only

Take your tablets at the same time every evening



Your doctor or nurse will tell you how many tablets to take and when to go for your next blood test

© Warfarin Flipchart Group, 2005
This is a clinical guideline only

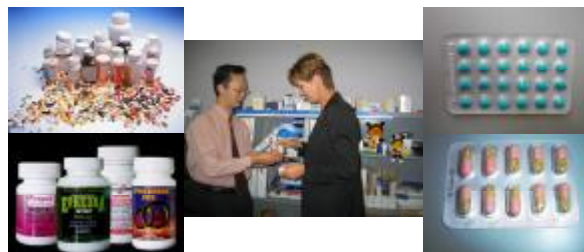
Call doctor or nurse if any of the following occurs:



- Any unusual bleeding or bruising
- Severe unexplained pain
- Fever, vomiting, diarrhoea, infection

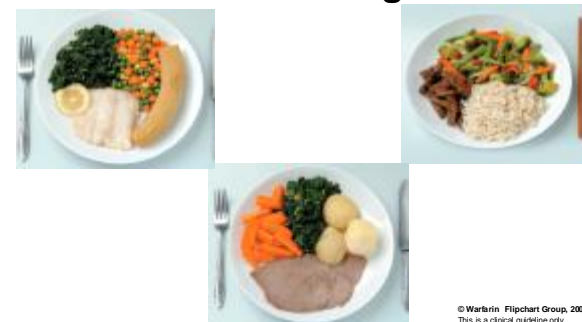
© Warfarin Flipchart Group, 2005
This is a clinical guideline only

Other medicines can affect warfarin: Ask your pharmacist or doctor about all your medicines



© Warfarin Flipchart Group, 2005
This is a clinical guideline only

Mix your green vegetables with other coloured vegetables*



© Warfarin Flipchart Group, 2005
This is a clinical guideline only

**This does not apply if you are on dialysis. You must consult with a dietician*

Take your warfarin at _____

Have regular blood tests starting _____

Phone your doctor for your INR results on the day of your blood test

Take the recommended dose until your next blood test

Other information/recommendations:

Follow these 3 steps:

Take the prescribed dose of warfarin at the same time each evening with a glass of water, then record that the dose has been taken, e.g. by making a cross on a calendar



3



1

Have a blood test on the appointed morning



2

Call your doctor that same afternoon for your INR result

© Warfarin Flipchart Group, 2005
This is a clinical guideline only